

From pros for pros  
Training catalog 2023/2024





# MAHLE Aftermarket presents its world of technology

## From exhaust gas turbochargers through cylinder liners

Whether trainees, qualified technicians, master technicians, or engineers: MAHLE Aftermarket offers the right training course for everyone.

In addition to teaching theory, MAHLE Aftermarket offers special practical training on damage prevention for passenger cars and trucks as well as for agricultural and construction machinery.

At MAHLE Aftermarket, we are flexible: you select the topic, tell us when and where the training should take place—and we'll take care of the rest. Alternatively, we also offer many of the topics as online training courses. Simply speak to your MAHLE Aftermarket trading partner or contact us directly at: [ma.training@mahle.com](mailto:ma.training@mahle.com).

MAHLE Aftermarket's technical experts look forward to organizing interesting and exciting events for you!



# Contents

<b>Introduction</b>	02
<hr/>	
The digital classroom	04
Our new training portal	05
<b>Theory in brief</b>	
<hr/>	
<b>T-AC</b> Air conditioning in the vehicle: air conditioning system design, function, and common causes of failure	06
<b>T-EC</b> Combustion engine in detail: engine parts design, function, and common causes of failure	07
<b>T-FI</b> Filtration in the vehicle: filter design, function, and common causes of failure	08
<b>T-NT</b> New technologies: opportunities and challenges in modern and alternative drives	09
<b>T-SA</b> Starter motors and alternators: starter motor and generator design, function, and common causes of failure	10
<b>T-TC</b> Turbochargers: exhaust gas turbocharger design, function, and common causes of failure	11
<b>T-TH</b> Thermal management: design, function, and common causes of failure of cooling circuit components	12
<b>T-WF</b> Workshop of the future: upcoming challenges for modern workshops	13
<b>T-TA</b> Thermal management of alternative drive systems: engine cooling and air conditioning in hybrid and electric vehicles	14
<b>Practical training</b>	
<hr/>	
<b>P-DP</b> Damage prevention: engine components	16
<b>P-TC</b> Damage prevention: turbochargers	17
<b>P-SA</b> Damage prevention: starter motors and alternators	18
<b>P-TH</b> Damage prevention: thermal management, engine cooling, and air conditioning	19
<b>Certified by MAHLE</b>	
<hr/>	
<b>C-SK</b> Expertise in vehicle air conditioning systems	21
<b>C-CG</b> Compressor Guarantee Plus	22

Repair work may only be carried out by technicians.  
Please refer to the vehicle-specific manufacturer's specifications.

# The digital classroom

## Our range of online training courses

You don't have to come to us to benefit from our learning opportunities. If it's not possible for you to train at one of our locations, or if you're keen to keep costs and downtimes to a minimum, we're also happy to run training courses online. All available training courses bear the label **"Online training also possible!"**

To arrange a date and register, or if you have any questions about our digital training courses, please either contact your **MAHLE Aftermarket trading partner** or send an e-mail to [ma.training@mahle.com](mailto:ma.training@mahle.com).



# Our new training portal

## Everything to get even better

On our new training portal <https://training.mahle.com>, you can now find even more courses and opportunities to further expand your expertise.

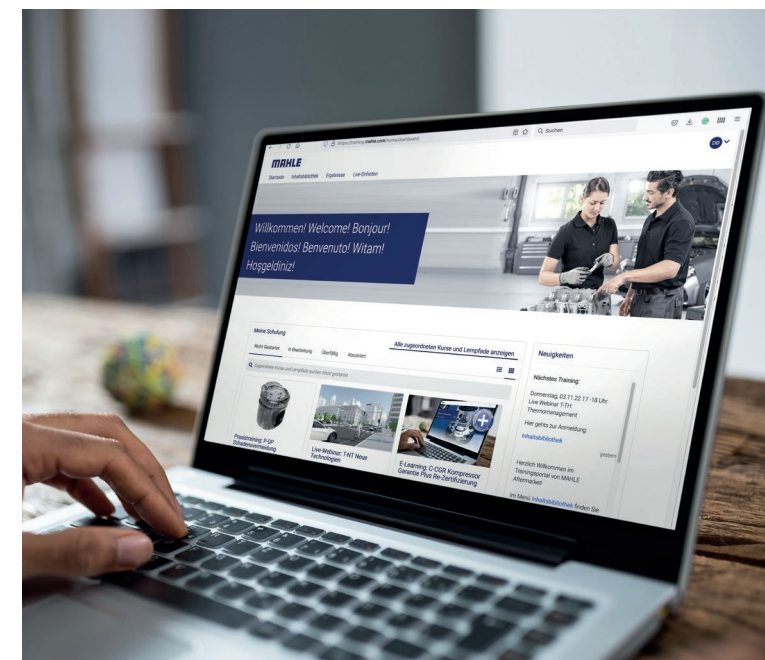
### Just book

All **live events and training courses** in this brochure can now be booked not only via your wholesaler but also directly via the portal. A number of MAHLE locations are also available to you as event venues.

### Homeschooling for automotive professionals

With us, you can even grow and develop from the comfort of your own home. Learn how to work more simply and efficiently with **live online training sessions** by our experts.

Our **interactive e-learning courses** give you the opportunity to learn something new at your leisure and whenever you want. The browser-based online training courses run on all PCs, tablets, and smartphones. And they are available around the clock. With these courses, expanding your knowledge is great fun.



You can  
register  
right here:





# T-AC

## Air conditioning in the vehicle

Air conditioning system design, function, and common causes of failure



### Contents

- Design and function of a vehicle air conditioning system
- Air conditioning requirements in current and future vehicles
- Function of the individual components of an air conditioning system
- Types of refrigerant and their differences
- Compressor oils and their differences
- Common causes of failure and damage in a refrigerant compressor
- Important steps during repair and assembly of the individual components
- Proper maintenance of the A/C system
- Avoidance of consequential damage
- Support in the event of damage

### Information for participants

**Duration:** 2 hours  
**Participants:** Maximum 30  
**Fee:** EUR 39.90 plus VAT

### Target group

- Vehicle master mechanics, experienced mechanics, and trainees
- Commercial vehicle master mechanics, experienced mechanics, and trainees
- Agricultural and construction machinery master mechanics, experienced mechanics, and trainees
- Authorized experts
- Sales staff



# T-EC

## Combustion engine in detail

Design, function, and common causes of failure of engine components



### Contents

- MAHLE engine components in the combustion engine
- Design and function of
  - Pistons
  - Valves
  - Bearings
  - Cylinder liners
- Correct installation
- Failure diagnostics
- Common causes of failure and damage
- Support in the event of damage

### Information for participants

**Duration:** 2 hours  
**Participants:** Maximum 30  
**Fee:** EUR 39.90 plus VAT

### Target group

- Vehicle master mechanics, experienced mechanics, and trainees
- Commercial vehicle master mechanics, experienced mechanics, and trainees
- Agricultural and construction machinery master mechanics, experienced mechanics, and trainees
- Authorized experts
- Sales staff







# T-FI

## Filtration in the vehicle

Filter design, function, and common causes of failure



### Contents

- Requirements of modern filtration in vehicles
- Design and function:
  - Oil filters
  - Fuel filters
  - Cabin filters
  - Air filters
- Automotive air conditioning
- Quality and distinguishing characteristics
- Typical filter damage scenarios
- Consequential damage in the engine periphery
- Support in the event of damage

### Information for participants

**Duration:** 2 hours  
**Participants:** Maximum 30  
**Fee:** EUR 39.90 plus VAT

### Target group

- Vehicle master mechanics, experienced mechanics, and trainees
- Commercial vehicle master mechanics, experienced mechanics, and trainees
- Agricultural and construction machinery master mechanics, experienced mechanics, and trainees
- Authorized experts
- Sales staff



# T-NT

## New technologies

Opportunities and challenges in modern and alternative drives



### Contents

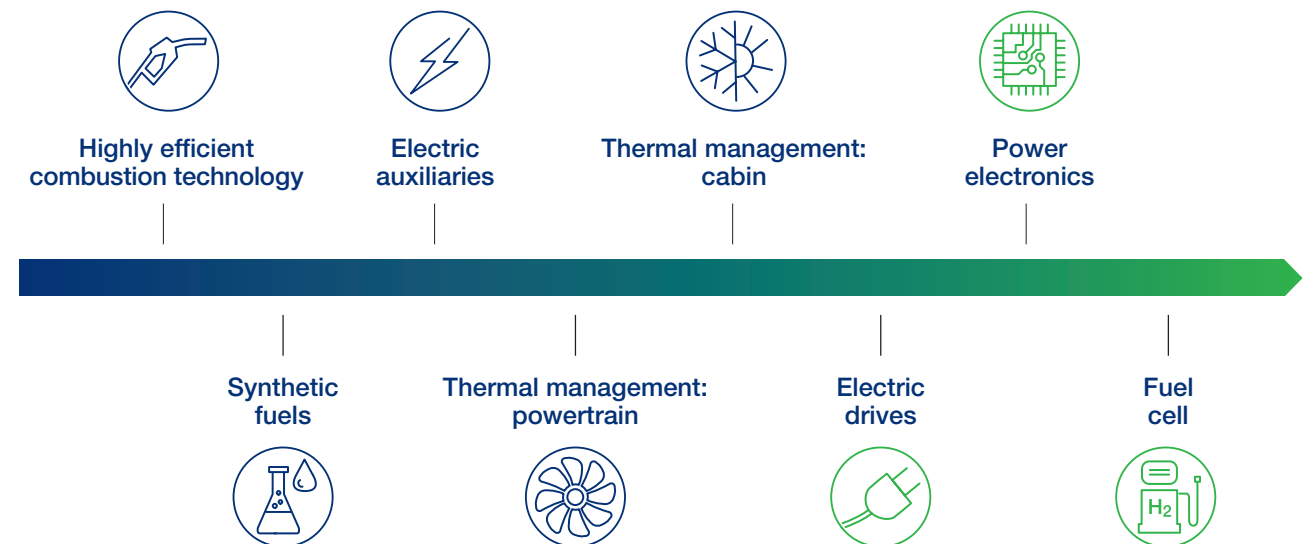
- Automotive trends and challenges
- Ongoing development of the combustion engine
- Alternative fuels
- Alternative drives
- Electrification of the powertrain
- Engine cooling and air conditioning

### Information for participants

**Duration:** 2 hours  
**Participants:** Maximum 30  
**Fee:** EUR 39.90 plus VAT

### Target group

- Vehicle master mechanics, experienced mechanics, and trainees
- Commercial vehicle master mechanics, experienced mechanics, and trainees
- Authorized experts
- Sales staff





# T-SA

## Starter motors and alternators

Starter motor and alternator design, function, and common causes of failure



### Contents

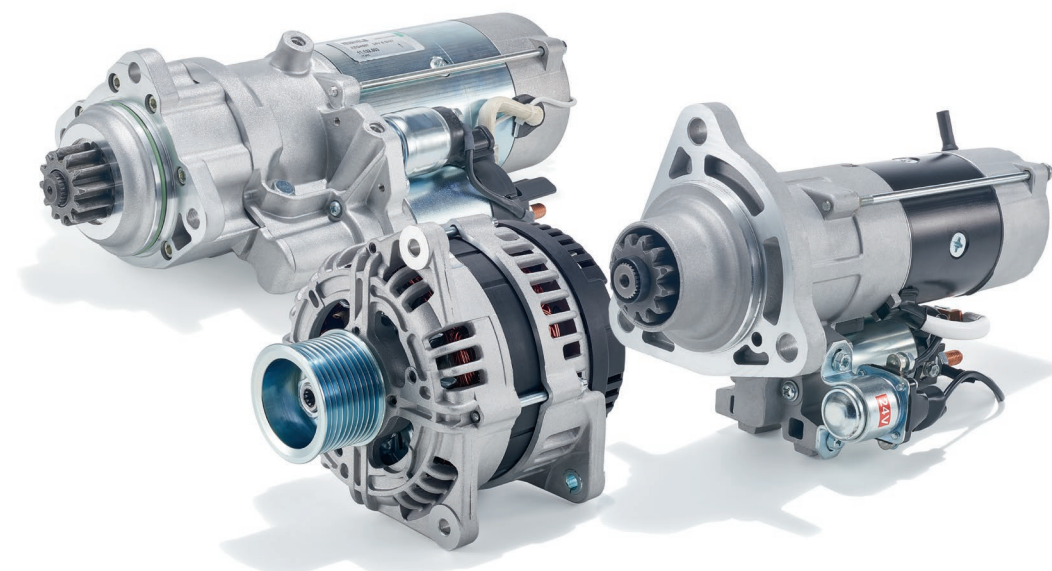
- Design and function:
  - Starter motors
  - Alternators
- Distinguishing and identifying characteristics
- Important steps during assembly
- Common causes of failure and damage
- Failure prevention during repair
- Support in the event of damage

### Information for participants

**Duration:** 2 hours  
**Participants:** Maximum 30  
**Fee:** EUR 39.90 plus VAT

### Target group

- Vehicle master mechanics, experienced mechanics, and trainees
- Commercial vehicle master mechanics, experienced mechanics, and trainees
- Agricultural and construction machinery master mechanics, experienced mechanics, and trainees
- Authorized experts
- Sales staff



# T-TC

## Turbochargers

Exhaust gas turbocharger design, function, and common causes of failure



### Contents

- Turbocharger design
- Detailed principles of operation
- Different types and models
- Code of conduct and important service work on turbocharged engines
- Common causes of failure in the turbocharger environment
- Possible causes of poor performance, noises, and other complaints
- Diagnosing damage in the engine periphery
- Consequential damage following turbocharger failure
- Support in the event of damage

### Information for participants

**Duration:** 2 hours  
**Participants:** Maximum 30  
**Fee:** EUR 39.90 plus VAT

### Target group

- Vehicle master mechanics, experienced mechanics, and trainees
- Commercial vehicle master mechanics, experienced mechanics, and trainees
- Agricultural and construction machinery master mechanics, experienced mechanics, and trainees
- Authorized experts
- Sales staff







# T-TH

## Thermal management

Design, function, and common causes of failure of cooling circuit components



### Contents

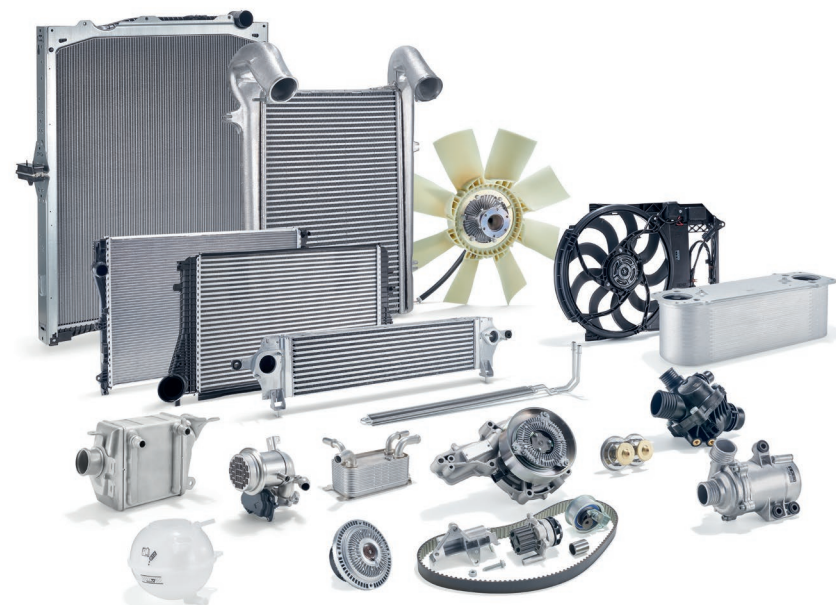
- Coolant circuit
- Design and function:
  - Radiators
  - Charge air coolers
  - Oil coolers
  - Exhaust gas coolers
  - Thermostats
  - Water pumps and kits
  - Switches and sensors
- Correct assembly and maintenance
- Cooling electronic components
- Typical cooling circuit damage scenarios
- Support in the event of damage

### Information for participants

**Duration:** 2 hours  
**Participants:** Maximum 30  
**Fee:** EUR 39.90 plus VAT

### Target group

- Vehicle master mechanics, experienced mechanics, and trainees
- Commercial vehicle master mechanics, experienced mechanics, and trainees
- Agricultural and construction machinery master mechanics, experienced mechanics, and trainees
- Authorized experts
- Sales staff



# T-WF

## Workshop of the future

Challenges and opportunities for the workshop of tomorrow



### Contents

- The workshop over time
- Changes in the automotive sector
- Future requirements for personnel and equipment
- Important changes and new developments in the market
- Digitalization of processes and procedures
- Driver assistance systems: maintenance and repair

### Information for participants

**Duration:** 2 hours  
**Participants:** Maximum 30  
**Fee:** EUR 39.90 plus VAT

### Target group

- Vehicle master mechanics, experienced mechanics, and trainees
- Commercial vehicle master mechanics, experienced mechanics, and trainees
- Agricultural and construction machinery master mechanics, experienced mechanics, and trainees
- Authorized experts
- Sales staff





New  
training  
course!

Online  
training  
also possible

# T-TA

## Thermal: alternative drives

Engine cooling and air conditioning in hybrid and electric vehicles



### Contents

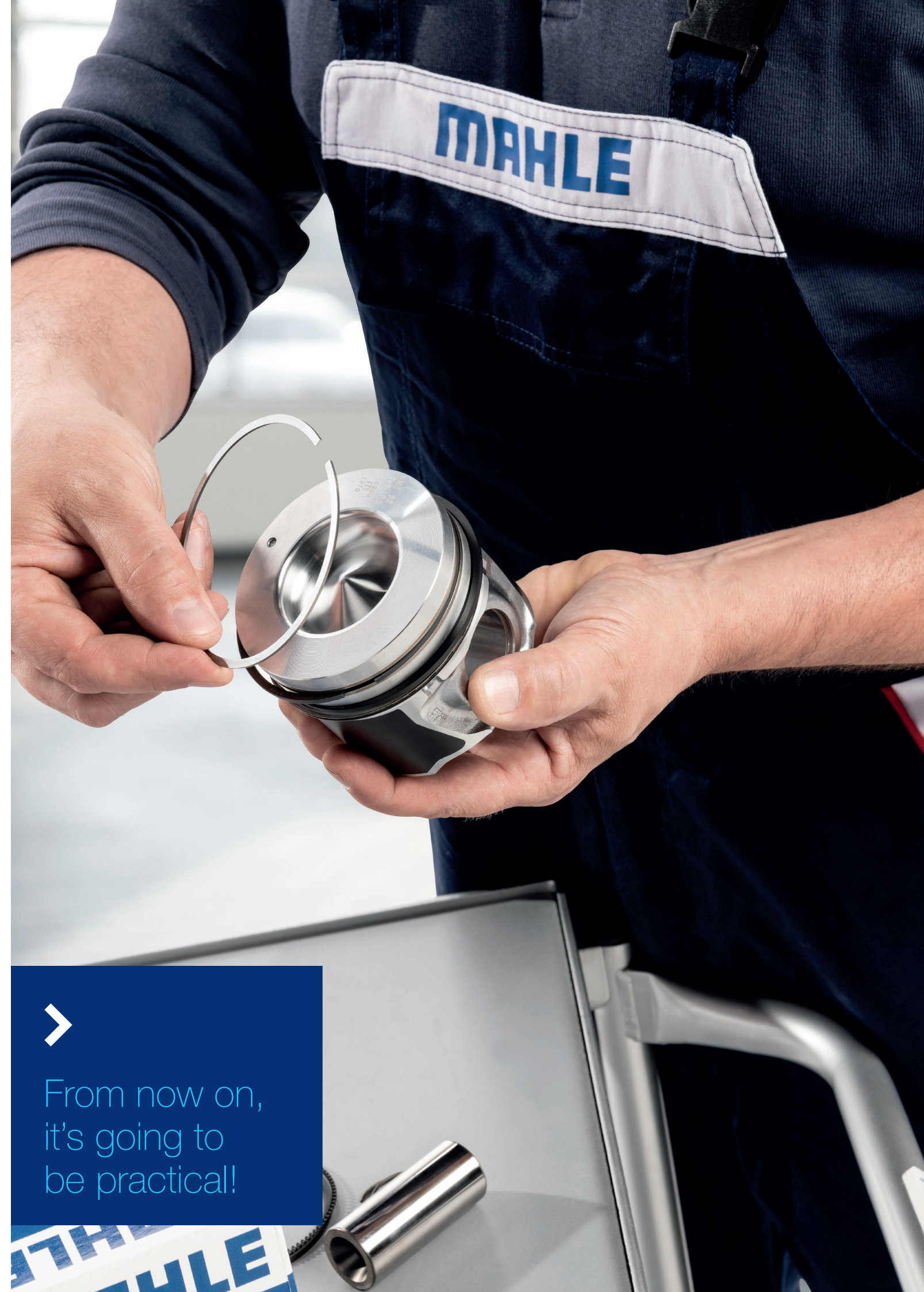
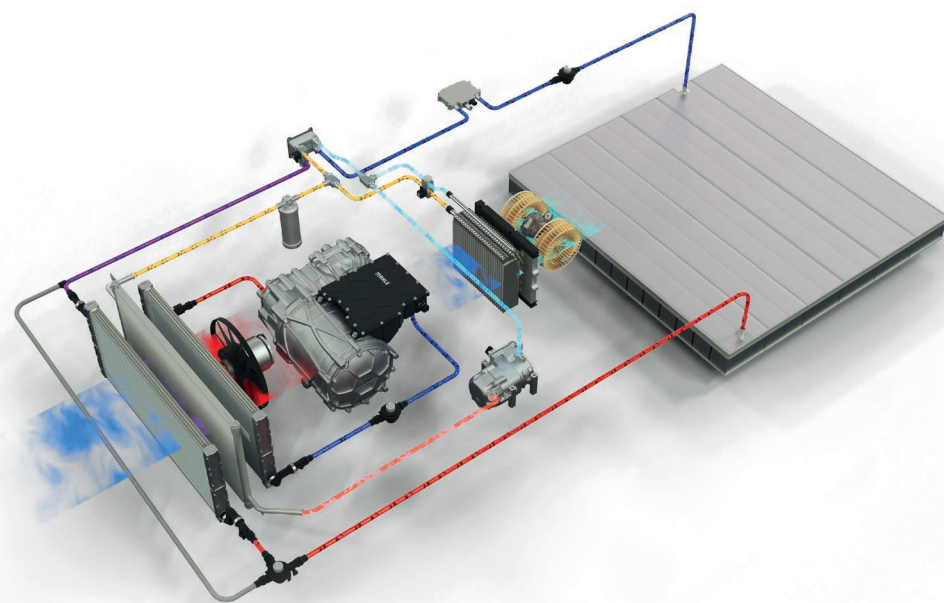
- Thermal management in hybrid and electric vehicles
- Comparison of drive types
- Cooling circuit: components and functions
- Air conditioning: components and functions
- Heat pump: purpose and function
- Requirements for maintenance, personnel, and workshop equipment

### Information for participants

**Duration:** 2 hours  
**Participants:** Maximum 30  
**Fee:** EUR 39.90 plus VAT

### Target group

- Vehicle master mechanics, experienced mechanics, and trainees
- Commercial vehicle master mechanics, experienced mechanics, and trainees
- Agricultural and construction machinery master mechanics, experienced mechanics, and trainees
- Authorized experts
- Sales staff



From now on,  
it's going to  
be practical!



# P-DP

## Damage prevention

Engine components



### Contents

- Practical assessment of damage to combustion engine components:
  - Pistons and cylinders
  - Bearings
  - Valves
  - Filters
  - Thermostats and thermal switches
  - Turbochargers
  - Other components in the engine environment
- Common causes of failure and damage
- Diagnostic options and measures
- Failure prevention during maintenance, service, and installation

### Information for participants

**Duration:** 8 hours  
**Participants:** Maximum 15  
**Fee:** EUR 159.90 plus VAT

### Target group

- Vehicle master mechanics, experienced mechanics, and trainees
- Commercial vehicle master mechanics, experienced mechanics, and trainees
- Agricultural and construction machinery master mechanics, experienced mechanics, and trainees
- Authorized experts

# P-TC

## Damage prevention

Turbochargers



### Contents

- Practical assessment of damage to:
  - Exhaust gas turbochargers
  - Charge air coolers
  - Control and regulation
  - Other components in the turbocharger environment
- Checking the complete system prior to repair
- Common causes of failure and damage
- Diagnostic options and measures
- Failure prevention during maintenance, service, and installation

### Information for participants

**Duration:** 8 hours  
**Participants:** Maximum 15  
**Fee:** EUR 159.90 plus VAT

### Target group

- Vehicle master mechanics, experienced mechanics, and trainees
- Commercial vehicle master mechanics, experienced mechanics, and trainees
- Agricultural and construction machinery master mechanics, experienced mechanics, and trainees
- Authorized experts



## Safety notice

This training course involves hands-on practice. Please wear clothing suitable for the workshop as well as safety shoes.



## Safety notice

This training course involves hands-on practice. Please wear clothing suitable for the workshop as well as safety shoes.



# P-SA

## Damage prevention

Starter motors and alternators



### Contents

- Practical assessment of damage to mechatronic components:
  - Starter motors
  - Alternators
- Common causes of failure and damage
- Diagnostic options and measures
- Failure prevention during maintenance, service, and installation

### Information for participants

**Duration:** 8 hours  
**Participants:** Maximum 15  
**Fee:** EUR 159.90 plus VAT

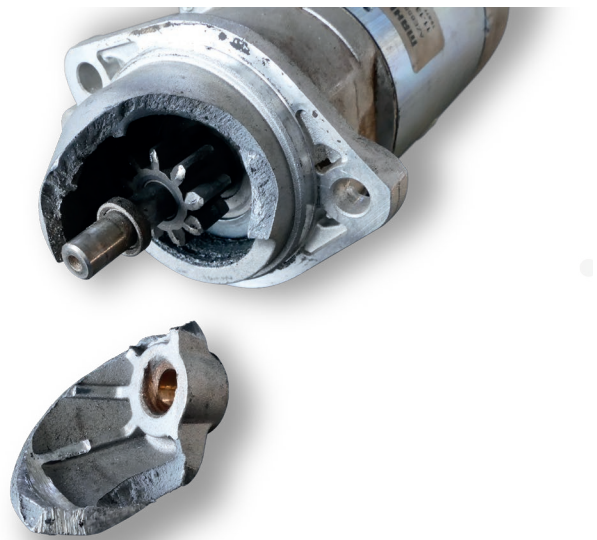
### Target group

- Vehicle master mechanics, experienced mechanics, and trainees
- Commercial vehicle master mechanics, experienced mechanics, and trainees
- Agricultural and construction machinery master mechanics, experienced mechanics, and trainees
- Authorized experts



## Safety notice

This training course involves hands-on practice. Please wear clothing suitable for the workshop as well as safety shoes.



# P-TH

## Damage prevention

Thermal management, engine cooling, and air conditioning



### Contents

- Practical assessment of damage to engine cooling and air conditioning components such as:
  - Air conditioning compressors
  - Air conditioning condensers
  - Thermostats
  - Radiators
  - Coolant pumps
  - Fans and blowers
  - Electronic components
  - Chillers, indirect condensers, and electric air conditioning compressors
- Recognizing common damage scenarios and their causes
- Diagnosing different causes of failure
- Failure prevention during maintenance, service, and installation

### Information for participants

**Duration:** 8 hours  
**Participants:** Maximum 15  
**Fee:** EUR 159.90 plus VAT

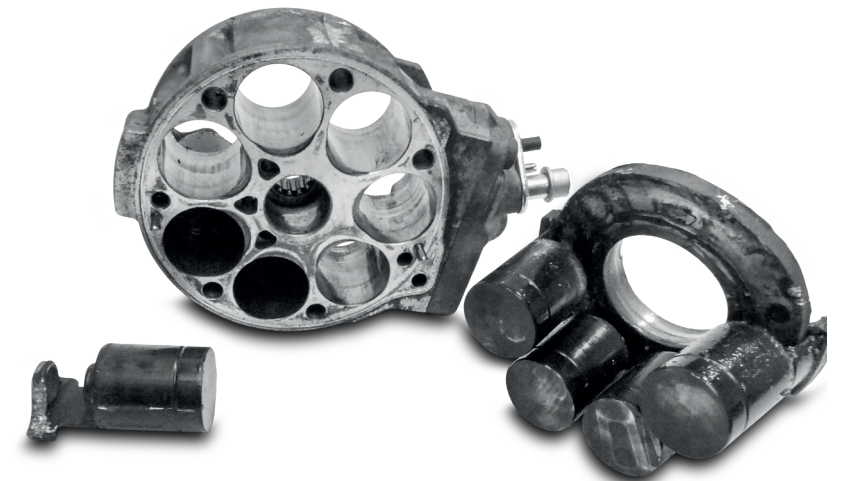
### Target group

- Vehicle master mechanics, experienced mechanics, and trainees
- Commercial vehicle master mechanics, experienced mechanics, and trainees
- Agricultural and construction machinery master mechanics, experienced mechanics, and trainees
- Authorized experts



## Safety notice

This training course involves hands-on practice. Please wear clothing suitable for the workshop as well as safety shoes.





# C-SK Expertise in vehicle air conditioning systems

In accordance with the Chem-KlimaschutzV\* in conjunction with regulations (EU) No. 517/2014 and (EC) No. 307/2008



## Contents

- Operating principles of A/C systems in motor vehicles
- Use and properties of fluorinated greenhouse gases
- Impact of emissions of F gases on the environment
- Basic knowledge of the relevant provisions of regulations (EC) No. 517/2014 and Directive 2006/40/EC
- Knowledge of the common processes for recovery of fluorinated greenhouse gases
- Handling a refrigerant container
- Working with the A/C service unit
- Operating a recovery unit

## Information for participants

**Duration:** 7 hours  
**Participants:** Maximum 12  
**Fee:** EUR 229.00 plus VAT

## Target group

- Vehicle master mechanics, experienced mechanics, and trainees
- Commercial vehicle master mechanics, experienced mechanics, and trainees
- Agricultural and construction machinery master mechanics, experienced mechanics, and trainees
- Authorized experts

## Registration

This training is also provided by our partner Trainmobil.

Register at [www.trainmobil.de](http://www.trainmobil.de) or [ma.training@mahle.com](mailto:ma.training@mahle.com).

\* The German Chemicals Climate Protection Ordinance



After passing the examination, held in accordance with regulations (EU) No. 517/2014 and (EC) No. 307/2008, you will be certified for repair and maintenance work on vehicle air conditioning systems.





# C-CG

## Compressor Guarantee Plus

Certification of participation in the Compressor Guarantee Plus program (only for Germany and Austria)



### Prerequisite

Participants must have passed the examination held in accordance with regulations (EU) No. 517/2014 and (EC) No. 307/2008

### Contents

- The air conditioning system and associated components
- Typical component damage
- Correct flushing of the air conditioning system
- Correct replacement of the air conditioning compressor
- Correct use of A/C service units and diagnostic tools
- Conversations with customers and sales aids
- Handling a warranty claim covered by Compressor Guarantee Plus

### Information for participants

**Duration:** 7 hours

**Participants:** Maximum 12

**Fee:** EUR 229.00 plus VAT

### Target group

- Vehicle master mechanics, experienced mechanics, and trainees
- Commercial vehicle master mechanics, experienced mechanics, and trainees
- Agricultural and construction machinery master mechanics, experienced mechanics, and trainees

### Registration

This training is also provided by our partner Trainmobil.

Register directly at [www.trainmobil.de](http://www.trainmobil.de) or [ma.training@mahle.com](mailto:ma.training@mahle.com).

## The guarantee with a plus

More value thanks to added value

More quality. More service. More satisfaction! These are the extra benefits that the Compressor Guarantee Plus program from MAHLE offers you. With MAHLE, you're supported by a strong expert partner with the extensive know-how of an original equipment manufacturer. Thanks to interesting and practical training on all aspects of air conditioning compressor replacement, workshops taking part in Compressor Guarantee Plus have the chance to gain expert knowledge at first hand and thus offer their customers an even better service.

The Compressor Guarantee Plus program also saves you time, so you can concentrate on what's important: your customers. That's because you're guaranteed to be credited in just a few days for every MAHLE air conditioning compressor warranty claim you submit—with minimal paperwork.

**Our plus in service. Your plus in satisfaction.**

### Our promise to you

Complexity made simple. There are many important details to consider when replacing an A/C compressor. MAHLE's compressor training courses give you the skills you need to perform A/C compressor replacements like a pro and ensure air conditioning systems operate without a hitch immediately afterward—without the need to spend further hours repeating the process. But that's not all! We promise every workshop participating in the Compressor Guarantee Plus program that MAHLE will be on hand as a strong partner at all times, even when it comes to warranty claims—in fact, we guarantee to accept every one of your claims.



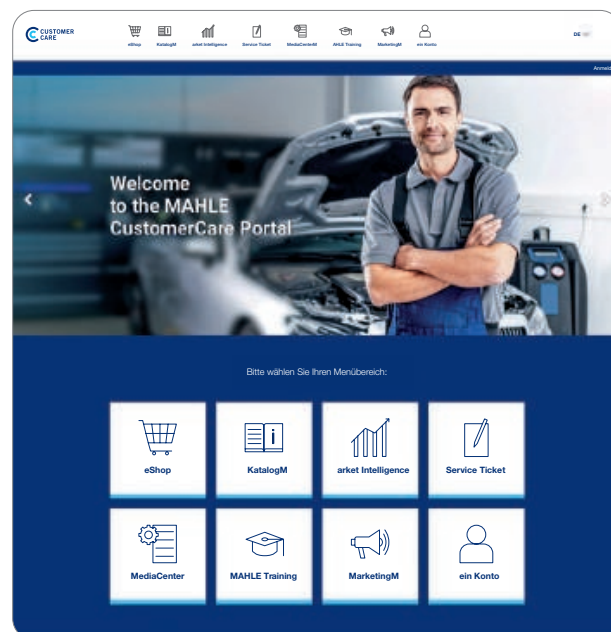
## The major plus for your workshop:

- No warranty claims turned down within the Compressor Guarantee Plus program
- Worry-free handling of any warranty claims that arise
- Guaranteed credit note
- Long-lasting qualifications
- Supportive cooperation
- Greater confidence in MAHLE



# From pros for pros — our services

*MAHLE Aftermarket offers workshops high-quality products for engines and peripherals, engine cooling & air conditioning, filtration, mechatronics, as well as e-mobility and electronics. Our portfolio is rounded off with a comprehensive package of services and information for workshops, which you can obtain from your wholesaler, MAHLE Aftermarket's sales representatives, or our website.*



## MAHLE CustomerCare Portal

The digital MAHLE customer portal is the key to our service world, bringing together all the products, services, and information that are important for your day-to-day work. In addition to a ticketing system that you can use to direct your requests to the MAHLE experts, you'll also find our advertising material shop here. Many of the materials shown on the following pages can be conveniently ordered in the shop. Register now for free at [customer-care.mahle-aftermarket.com](https://customer-care.mahle-aftermarket.com).



Further information  
is available here.



## TechTool

Thermal management background knowledge at first hand—that's exactly what TechTool by MAHLE provides. Detailed insights into technical processes, active troubleshooting, and basic information are available online at any time, showing you how automotive air conditioning and engine cooling work in passenger cars and commercial vehicles.



Further information  
is available here.



In the Technical Messenger, we regularly provide automotive professionals with technical information and tips on maintenance and repair. You can find the latest issue on our website or in our monthly newsletter MAHLE Insider.



Further information  
is available here.



## Online filling quantities tool

Which filling quantities apply to which vehicle? You'll find the precise answers to this question for most common vehicle types in our current filling quantity manual for refrigerant and air conditioning compressor oil.



Further information  
is available here.



## Damage brochures and workshop equipment training catalog

Our damage brochures are indispensable reference guides for many workshops and training facilities. They offer comprehensive information on types of damage that frequently occur, along with images and detailed explanations on findings and causes as well as how to remedy or avoid these.

Training and further education programs for all MAHLE workshop equipment products from ArcticPRO® to TechPRO® Digital ADAS 2.0 can be found in our workshop equipment training catalog. In the courses, the experts from MAHLE Service Solutions show you everything you need to know, from the basics to the operation and maintenance of the products.

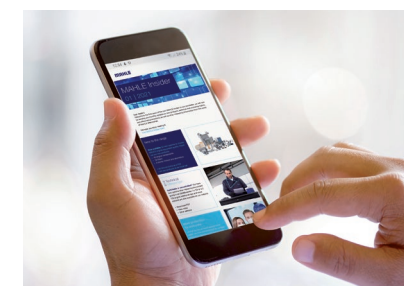


Further information  
is available here.



## Service around the clock: MAHLE Aftermarket product hotline

You can find the contact details on the website of your local MAHLE branch.



## MAHLE Insider

Our monthly newsletter keeps you informed about new products, technical and workshop topics, and offers and promotions, as well as other interesting information from the world of MAHLE Aftermarket.

- Monthly newsletter
- Spotlight on new products (CIS), Technical Messenger, product highlights
- Available in the following languages: DE, EN, ES, FR, PL, TR

Would you like to receive the monthly newsletter?

Register here: [www.mahle-aftermarket.com/eu/en/services/mahle-insider/](https://www.mahle-aftermarket.com/eu/en/services/mahle-insider/)



Or scan the  
QR code.

Terms and conditions for participation in technical training courses  
by MAHLE Aftermarket GmbH (valid from 08/2022)

Organizer

The organizer of the training courses and the corresponding contractual partner is exclusively the legal entity MAHLE Aftermarket GmbH, Pragstr. 26–46, 70376 Stuttgart/Germany ("MAHLE").

1. Registration for technical training courses offered by  
MAHLE Aftermarket GmbH

You can register in the following ways:

- By e-mail: [ma.training@mahle.com](mailto:ma.training@mahle.com)
- By mail: MAHLE Aftermarket GmbH, METP department, Schorndorfer Str. 96, 73614 Schorndorf/Germany
- Via our training portal at: <https://training.mahle.com/>

Minors must include the signed written permission of their legal guardian.

The registration deadline is five working days before the start of the respective event. For live online training courses, registration and cancellation can take place up until the start of the respective online training course.

2. Conclusion of contract (offer, offer documents,  
order confirmation)

Our training offers are always subject to change and are non-binding. A corresponding contract shall only be concluded after MAHLE sends the written order confirmation—usually in the form of an e-mail.

3. Reconfirmation of the registration for the training course  
in the training portal [training.mahle.com](https://training.mahle.com)

For technical reasons only, you must again consent to the training booking fee before the start of the course. This does not count as an additional booking of further training courses.

4. Cancellation by participant; consumer's right  
of cancellation

Written or digital cancellation of the registration by the participant is free of charge until five working days before the start of the event, or, for live online training, until the start of the course.

The date of receipt of the cancellation shall be decisive.

Contact:

- By e-mail: [ma.training@mahle.com](mailto:ma.training@mahle.com)
- By mail: MAHLE Aftermarket GmbH, METP department, Schorndorfer Str. 96, 73614 Schorndorf/Germany
- Via our training portal: <https://training.mahle.com/>

For cancellations received after five working days before the start of the course—or later than the start of live online training—and in the case of no-shows by the participant, 50% of the respective participation fee will be due.

Until the start of the event, participants may designate substitute participants free of charge. Registration must be made in writing to [ma.training@mahle.com](mailto:ma.training@mahle.com).

Consumers always have a free 14-day right of cancellation from the time the contract is concluded. The cancellation can be done:

- By e-mail: [ma.training@mahle.com](mailto:ma.training@mahle.com)
- By mail: MAHLE Aftermarket GmbH, METP department, Schorndorfer Str. 96, 73614 Schorndorf/Germany
- Via our training portal: <https://training.mahle.com/>

5. Cancellation by the organizer

An event may be cancelled by the organizer if there is a good reason for doing so. Cancellation will be made immediately and usually by e-mail. Good reasons for such cancellation include failure to reach the minimum number of participants specified for the course, prohibition of the event due to official orders in connection with COVID-19, illness or unforeseeable incapacity of speakers, or force majeure. In such a case, participation fees already paid will be refunded. Any further claims shall be excluded.

6. Program change by the organizer

The organizer reserves the right to make changes to the program, especially in order to adapt the training to the group of participants.

7. House rules

The conditions mentioned in the offer must be complied with, especially those relating to any requirements concerning safety clothing and mandatory masks in connection with COVID-19. MAHLE reserves the right to exclude participants from the training, with due observance of further rights, in the event of a violation and failure to remedy the violation despite being requested to do so. In such a case, the obligation to pay the participation fee remains unaffected.

8. Payment terms

The participation fee is due upon receipt of the invoice.

9. Warranty and liability

The training courses are subject to the law on service agreements. MAHLE does not guarantee the success of any participant.

The training does not release the participant from his or her obligations of due diligence, particularly, the obligation to properly examine whether the contents are appropriate and applicable in each specific case.

The participant recognizes and agrees that general content is conveyed in the training sessions, but that such content is not necessarily appropriate or applicable in every individual case. A warranty and liability on the part of MAHLE for the suitability and practicality of training content for a specific purpose are therefore excluded, except in the case of willful intent or gross negligence on the part of MAHLE.

A warranty and liability on the part of MAHLE are excluded, except in accordance with the following provision. The aforementioned exclusion of liability and warranty on the part of MAHLE shall not apply where MAHLE is liable due to product liability, willful intent, gross negligence, injury to life, limb, or health, or due to the provision of a guarantee or the breach of essential contractual obligations. However, compensation for damages due to breach of essential contractual obligations—that is, those that make the execution of the contract possible and on which the participant may regularly rely—is limited to the foreseeable damage typical of the contract, unless there is willful intent or gross negligence on the part of MAHLE.

A reversal of the burden of proof is not associated with the above provisions.

Insofar as MAHLE's liability is limited or excluded in accordance with the above provisions, this shall also apply in favor of its corporate bodies, employees, representatives, and agents.

10. Confidentiality

Information, knowledge, and experience ("information") that participants receive from MAHLE must be treated confidentially by the participants and may not be disclosed by the participants to third parties and may only be used by the participants themselves or in their own operations. Within the participant's own company, the participant may only make information available to company employees who need the information for their work in the participant's company and who are also obligated to maintain confidentiality and not to use it, for example, in the employment contract.

This does not apply to information that the participant proves is generally known or has become generally known without the participant's involvement or that was already known to the participant prior to transmission by MAHLE or that became known to the participant independently of the training or that was legitimately made accessible to the participant by third parties without any confidentiality or non-use obligation.

11. Prohibition of records

Participants are not permitted to make and/or publish recordings and notes made of the information received during training—whether in whole or in part.

12. Choice of law and place of jurisdiction for  
registered traders

German law shall apply exclusively, with the exception of the CISG.

The exclusive local place of jurisdiction is Stuttgart/Germany, unless another place of jurisdiction is mandatory.





MAHLE Insider

MAHLE Aftermarket GmbH  
Pragstraße 26–46  
70376 Stuttgart/Germany  
Phone: +49 711 501-0

[www.mahle-aftermarket.com](http://www.mahle-aftermarket.com)  
[www.mpulse.mahle.com](http://www.mpulse.mahle.com)